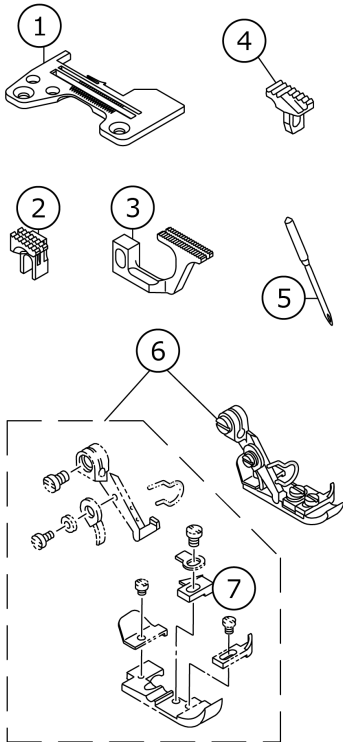


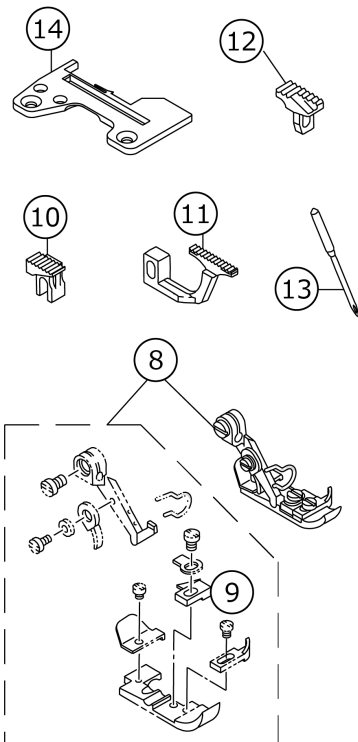
# MO-6704 SUBCLASSES

## MO-6704S SUBCLASSES (1)

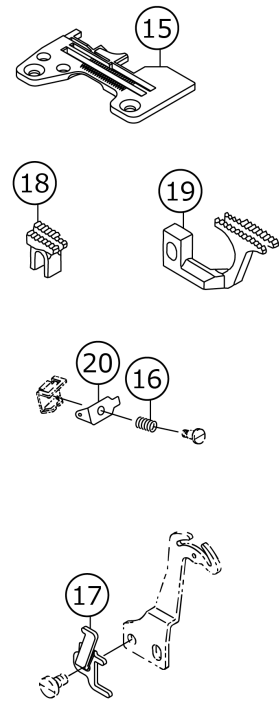
1.MO-6704S-0A4-150



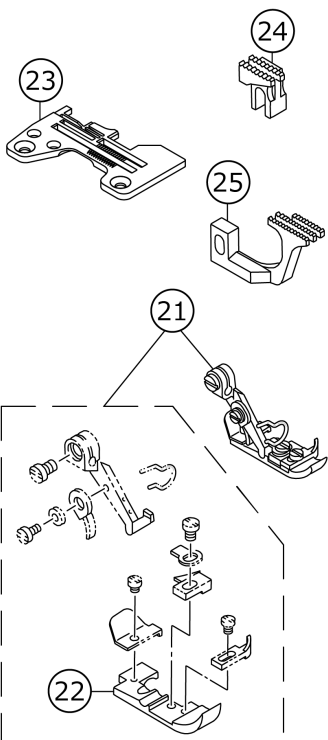
2.MO-6704S-0A5-150



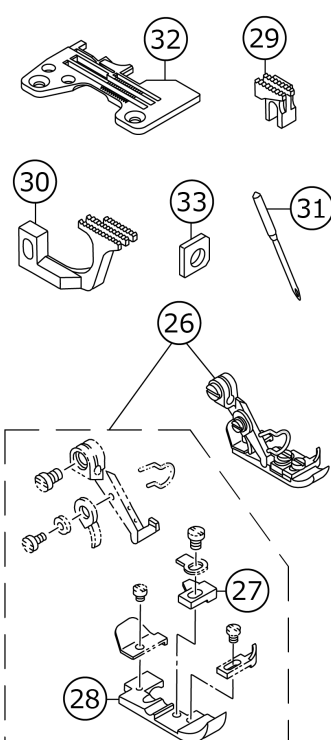
3.MO-6704S-0D4-3F6



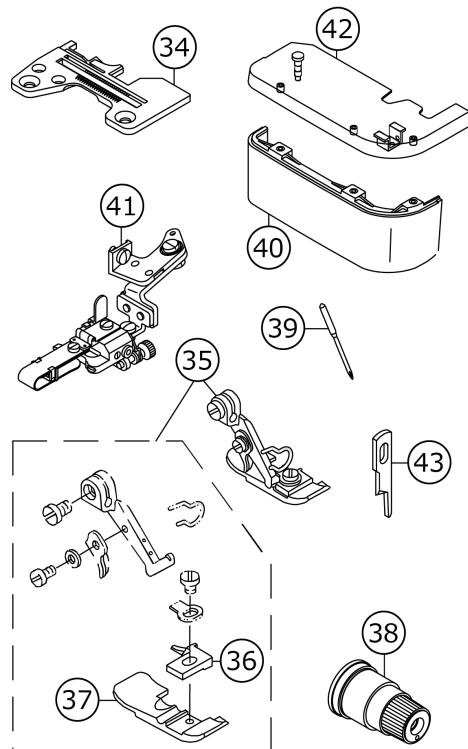
4.MO-6704S-0D6-300



5.MO-6704S-0F6-500



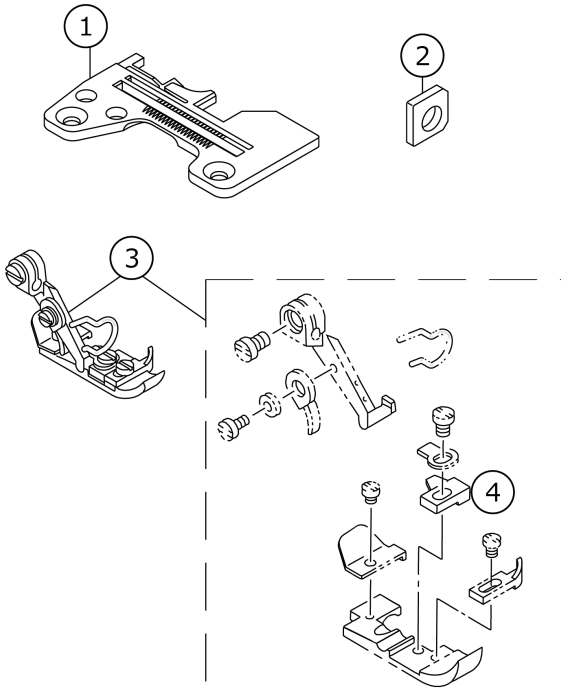
6.MO-6705S-0D4-210/L121



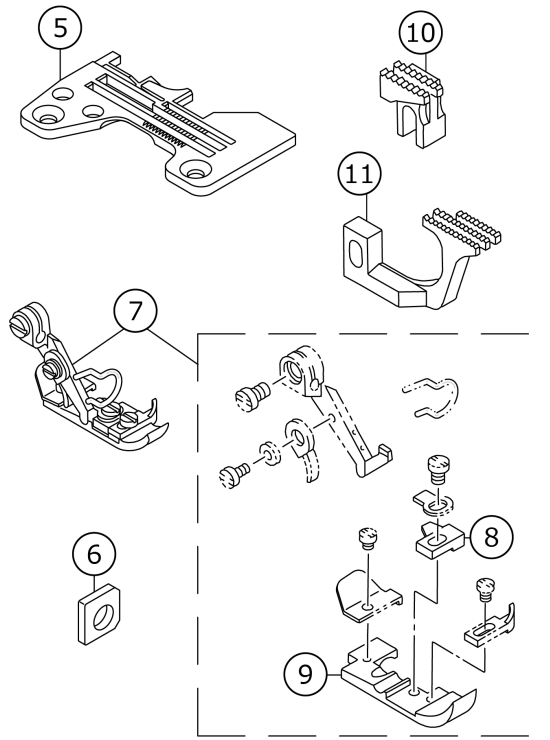
No.	品番	品名	備考	子部品	消耗品	個数
1	R4200J6AC00	THROAT PLATE				1.00
2	11898905	MAIN FEED DOG				1.00
3	11899002	DEFERENTIAL FEED DOG				1.00
4	11887007	AUXILIARY FEED DOG				1.00
5	MDC100B0800	NEEDLE DCX1 #8				1.00
6	11876067	PRESSER FOOT ASM.				1.00
7	11792900	STITCH TONGUE		*		1.00
8	11876067	PRESSER FOOT ASM.				1.00
9	11792900	STITCH TONGUE		*		1.00
10	11882008	MAIN FEED DOG				1.00
11	11885001	DIFFERENTIAL FEED DOG				1.00
12	11887007	AUXILIARY FEED DOG				1.00
13	MDC100B0800	NEEDLE DCX1 #8				1.00
14	R4100J6AC00	THROAT PLATE				1.00
15	R4200J6DD0C	THROAT PLATE				1.00
16	12112702	NEEDLE THREAD PRESSER SPRING B				1.00
17	12112603	DIFFERENTIAL FEED CAM				1.00
18	11597101	MAIN FEED DOG				1.00
19	11886207	DIFFERENTIAL FEED DOG				1.00
20	12112504	NEEDLE THREAD PRESSER PLATE C				1.00
21	11876364	PRESSER FOOT ASM.				1.00
22	11873007	PRESSER FOOT		*		1.00
23	R4300J6DE00	THROAT PLATE				1.00
24	11882206	MAIN FEED DOG				1.00
25	11885100	DIFFERENTIAL FEED DOG				1.00
26	11876463	PRESSER FOOT ASM.				1.00
27	B1509804C0A	STITCH TONGUE		*		1.00
28	11873007	PRESSER FOOT		*		1.00
29	11883303	MAIN FEED DOG				1.00
30	11885605	DIFFERENTIAL FEED DOG				1.00
31	MDC270B1400	NEEDLE DCX27 #14				1.00
32	R4300J6FE0B	THROAT PLATE				1.00
33	13132006	GAUGE				1.00
34	R4200J6DD00	THROAT PLATE				1.00
35	11992153	PRESSER FOOT ASM.				1.00
36	11874807	STITCH TONGUE		*		1.00
37	11992104	PRESSER FOOT		*		1.00
38	13138359	THREAD TENSION SPRING JUNCTION				1.00
39	MDC270B0900	NEEDLE DCX27 #9				1.00
40	12104709	CLOTH PLATE COVER				1.00
41	MAL121000A0	SKIRT DRAGGING COMPL.				1.00
42	12105557	CLOTH PLATE ASM.				1.00
43	13150602	PLAIN KNIFE				1.00

# MO-6704S SUBCLASSES (2)

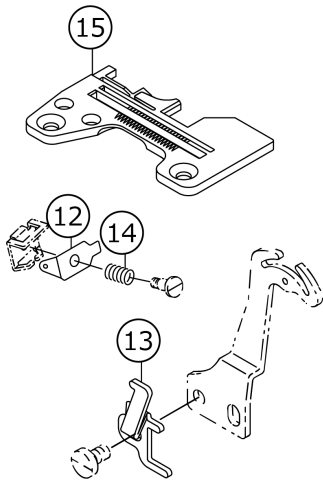
7.MO-6704S-0F4-300



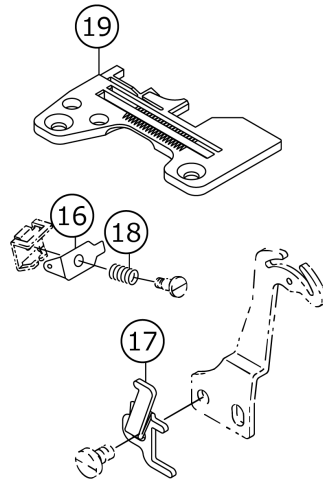
8.MO-6704S-0F6-300



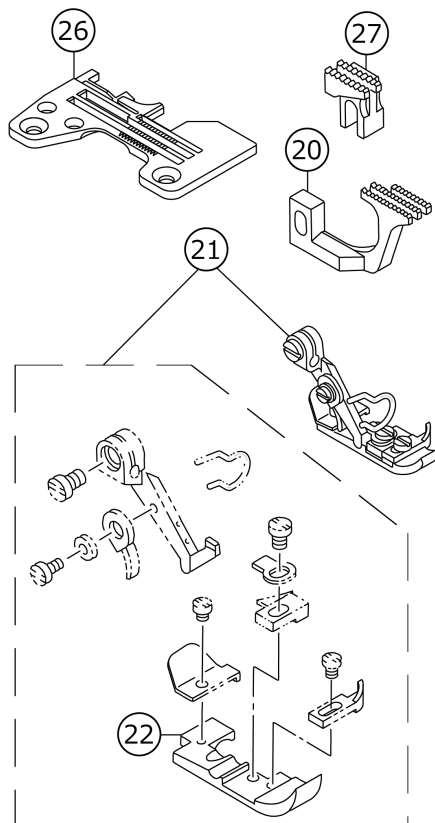
9.MO-6704S-0D4-3F0



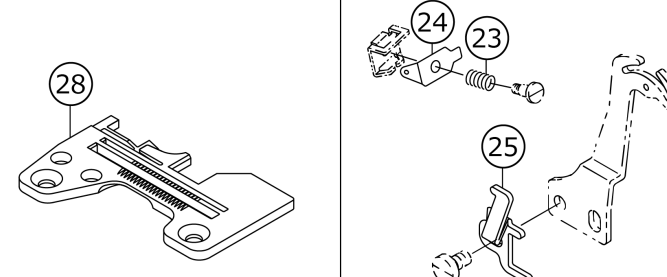
10.MO-6704S-0E4-3F0



11.MO-6704S-0D6-3F0



12.MO-6704S-0D4-300



No.	品番	品名	備考	子部品	消耗品	個数
1	R4200J6FD00	THROAT PLATE				1.00
2	13132006	GAUGE				1.00
3	11876265	PRESSER FOOT ASM.				1.00
4	B1509804C0A	STITCH TONGUE		*		1.00
5	R4300J6FE0B	THROAT PLATE				1.00
6	13132006	GAUGE				1.00
7	11876463	PRESSER FOOT ASM.				1.00
8	B1509804C0A	STITCH TONGUE		*		1.00
9	11873007	PRESSER FOOT		*		1.00
10	11882206	MAIN FEED DOG				1.00
11	11885100	DIFFERENTIAL FEED DOG				1.00
12	12112504	NEEDLE THREAD PRESSER PLATE C				1.00
13	12112603	DIFFERENTIAL FEED CAM				1.00
14	12112702	NEEDLE THREAD PRESSER SPRING B				1.00
15	R4200J6DD0A	THROAT PLATE				1.00
16	12112504	NEEDLE THREAD PRESSER PLATE C				1.00
17	12112603	DIFFERENTIAL FEED CAM				1.00
18	12112702	NEEDLE THREAD PRESSER SPRING B				1.00
19	R4200J6ED0A	THROAT PLATE				1.00
20	11885100	DIFFERENTIAL FEED DOG				1.00
21	11876364	PRESSER FOOT ASM.				1.00
22	11873007	PRESSER FOOT		*		1.00
23	12112702	NEEDLE THREAD PRESSER SPRING B				1.00
24	12112504	NEEDLE THREAD PRESSER PLATE C				1.00
25	12112603	DIFFERENTIAL FEED CAM				1.00
26	R4300J6DE0A	THROAT PLATE				1.00
27	11882206	MAIN FEED DOG				1.00
28	R4200J6DD00	THROAT PLATE				1.00

# HOW TO MAKE USE OF THIS PARTS LIST

1.As to "#01" and "#02" refer to the "Note" given at the bottom of the respective pages.

2.Codes on the "Qty" column

- Each numeral indicates the number of parts required.
- "0.1" and "2.5" indicate the length (in meters) of the respective parts.

3.Parentheses mean that the corresponding part is a subpart that constructs an assembly part.

4.Dotted lines on the Figures indicate assembly parts.

1. リストページの# 0 1、# 0 2の印は、ページ下の"注記"の説明を参照下さい。

2. 数量欄の数字は、個数を表し、0. 1、2. 5等の数値は、長さ（単位メートル）を表します。

3. 数量欄の（ ）は、組部品を構成している子部品であることを意味します。

4. イラストページの-----枠は、組構成であることを意味します。